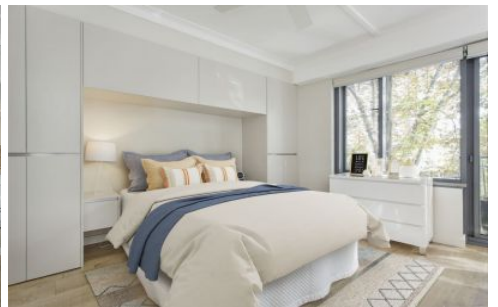




**EXECUTIVE STYLE
PROPERTY**



5/57 Cowper Wharf Road Woolloomooloo NSW

1 1 1

Sunny north facing and quietly located in a modern security block.

Opposite Woolloomooloo Bay and the iconic Finger Wharf, this light filled apartment enjoys views of leafy treetops, the shimmering harbour and across to the city skyline.

Opening to a Juliette balcony.

This harbourside apartment is footsteps from trendy cafes, bars, restaurants and convenience stores, and a short stroll to Potts Point shops, the Botanic Gardens and Sydney CBD.

+ Spacious open plan living with northerly balconette

[For full version visit the website](https://www.executivestyleproperty.com.au)

Type : Apartment

View : <https://www.executivestyleproperty.com.au/lease/nsw/sydney-city/woolloomooloo/residential/apartment/8041530>



Suzy Gilmour
0412 559 651

<https://www.executivestyleproperty.com.au>